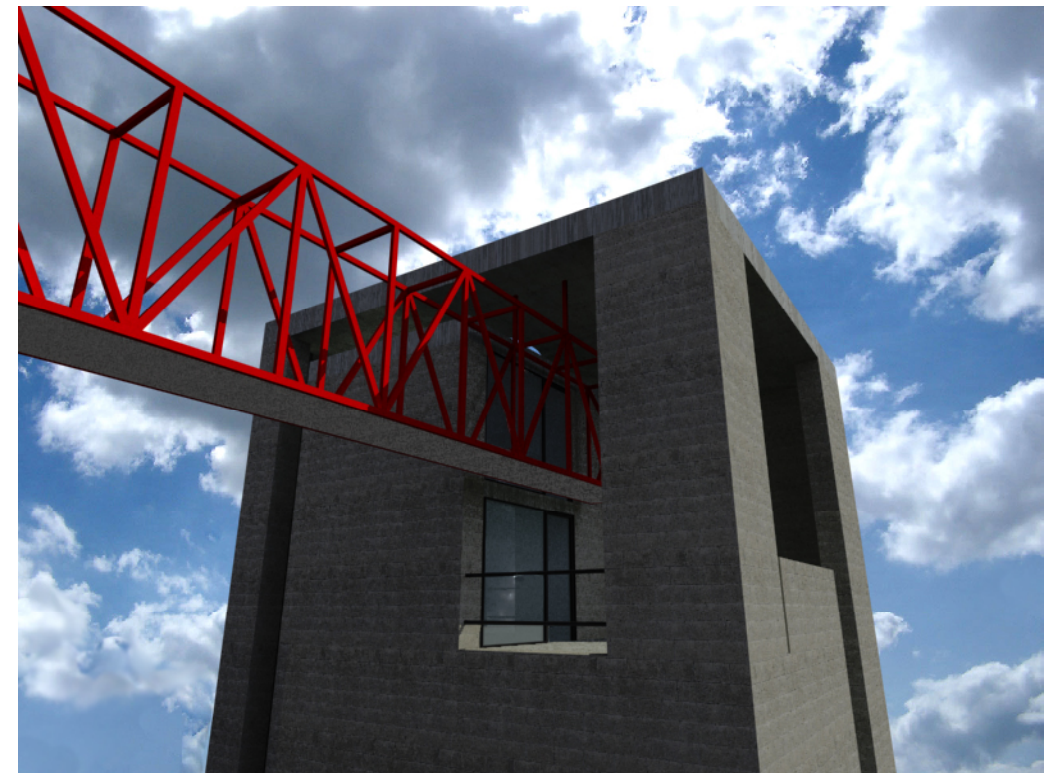
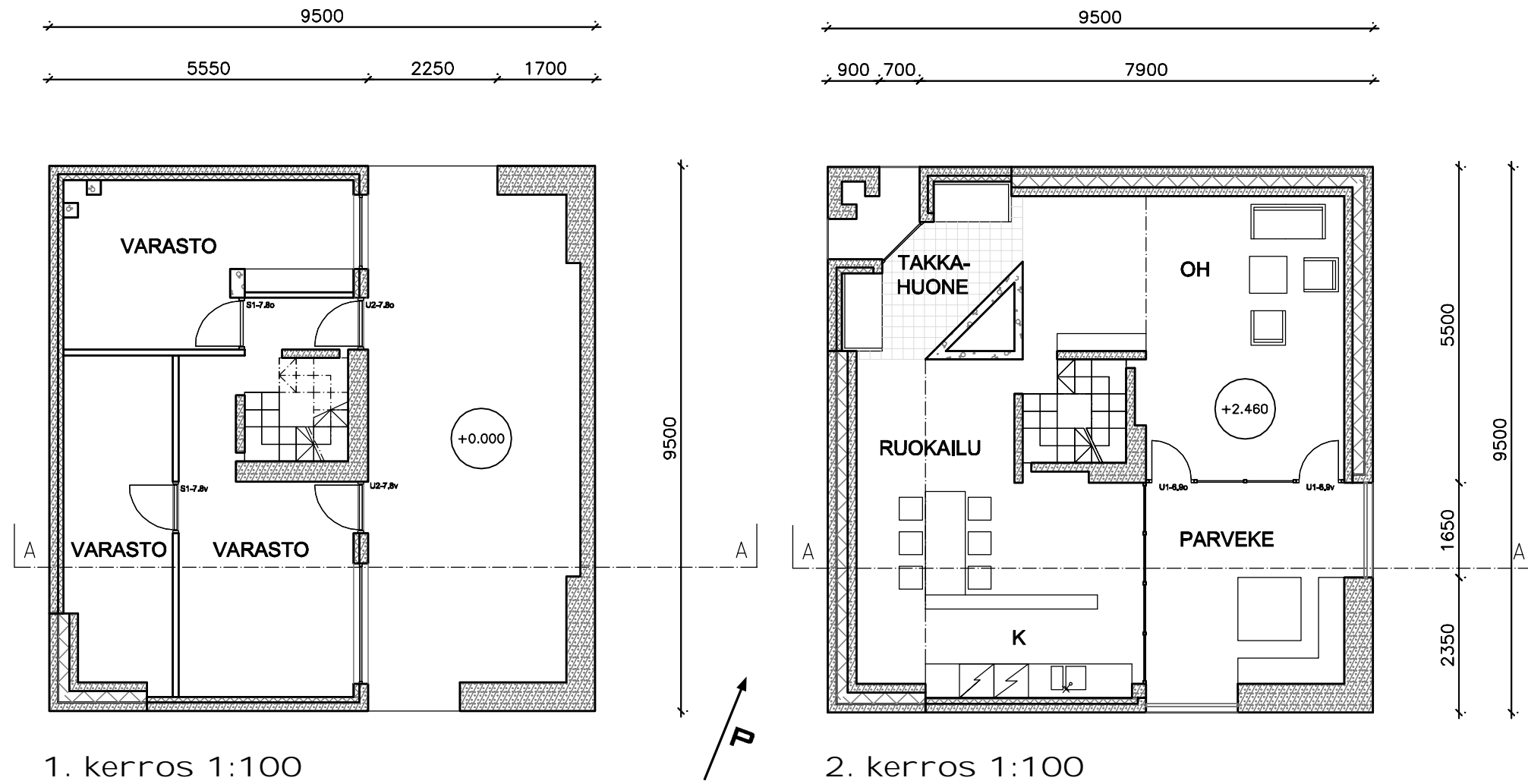


MARIO BOTTA BIANCHI HOUSE



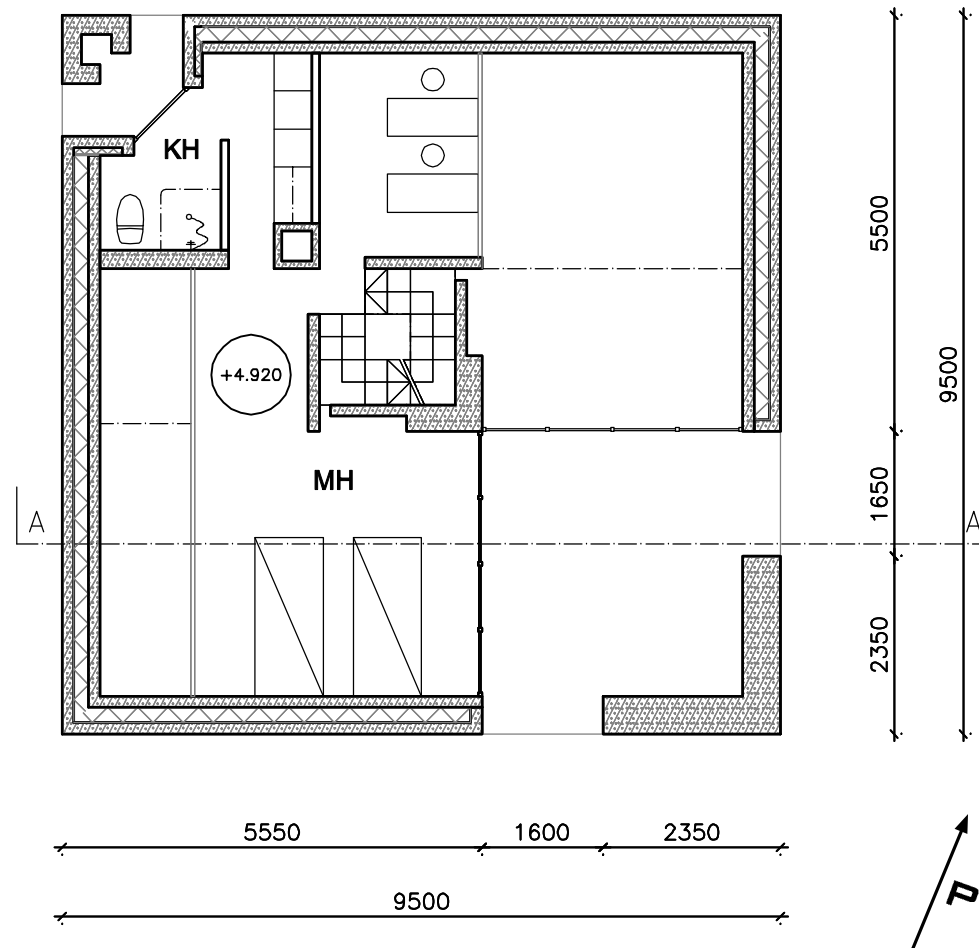
ADT:n perusteet A-9.1173 | TKK, Arkkitehtiosasto | Ville Riikonen 67487W | 06-06-2006

Mario Botta Bianchi House

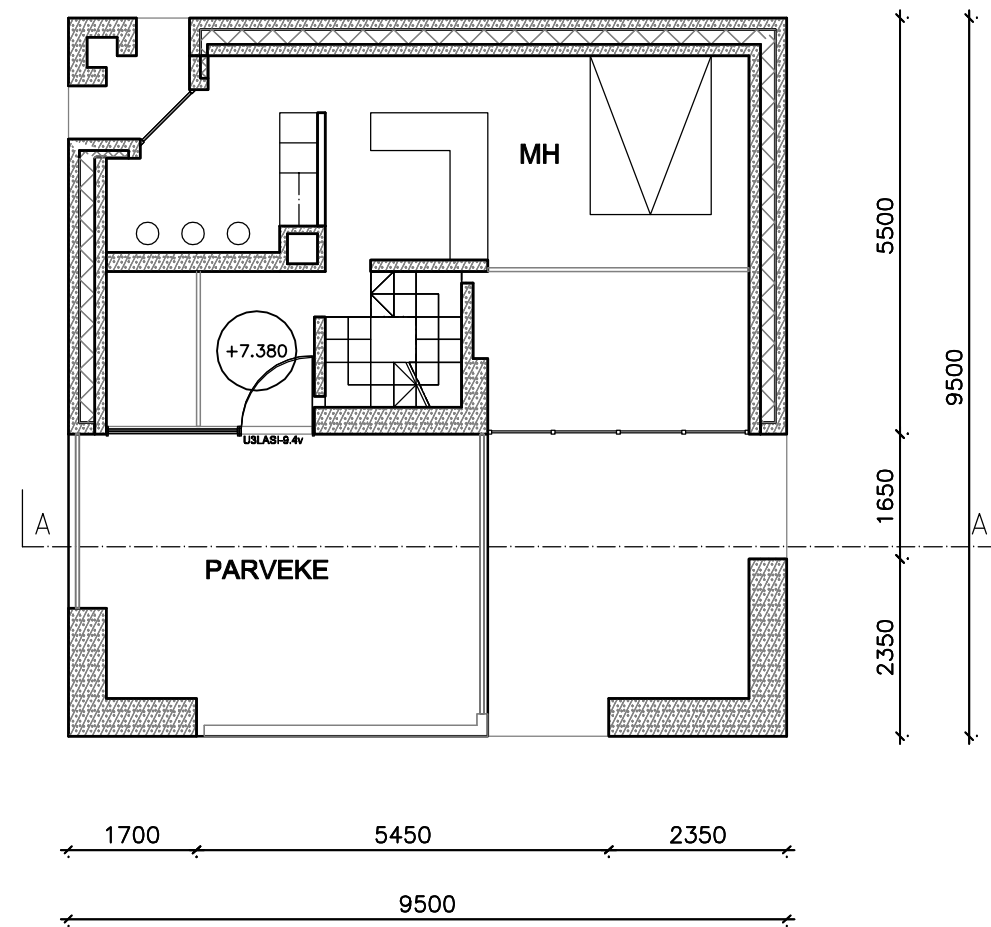


Mario Botta Bianchi House

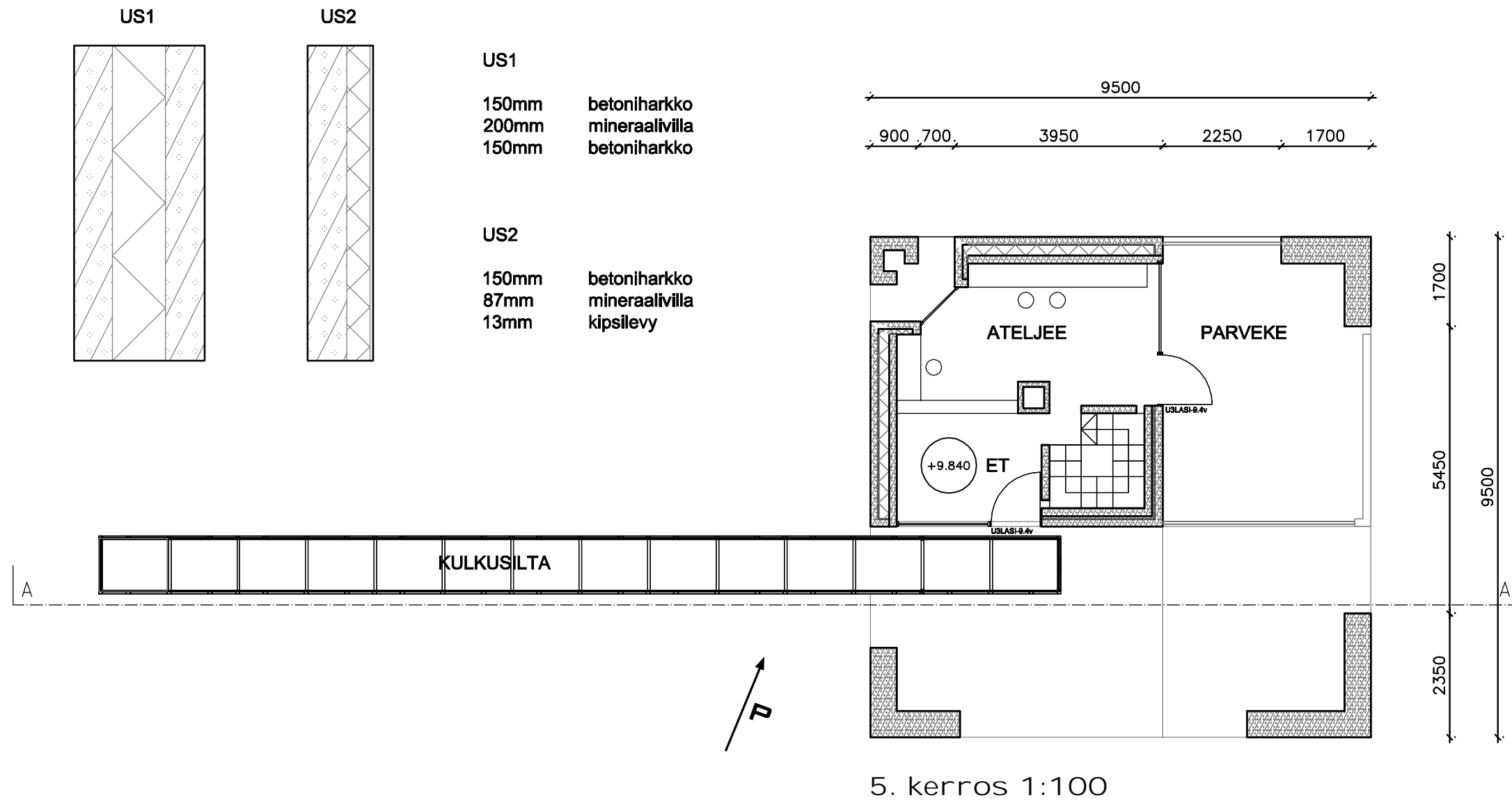
3. kerros 1:100



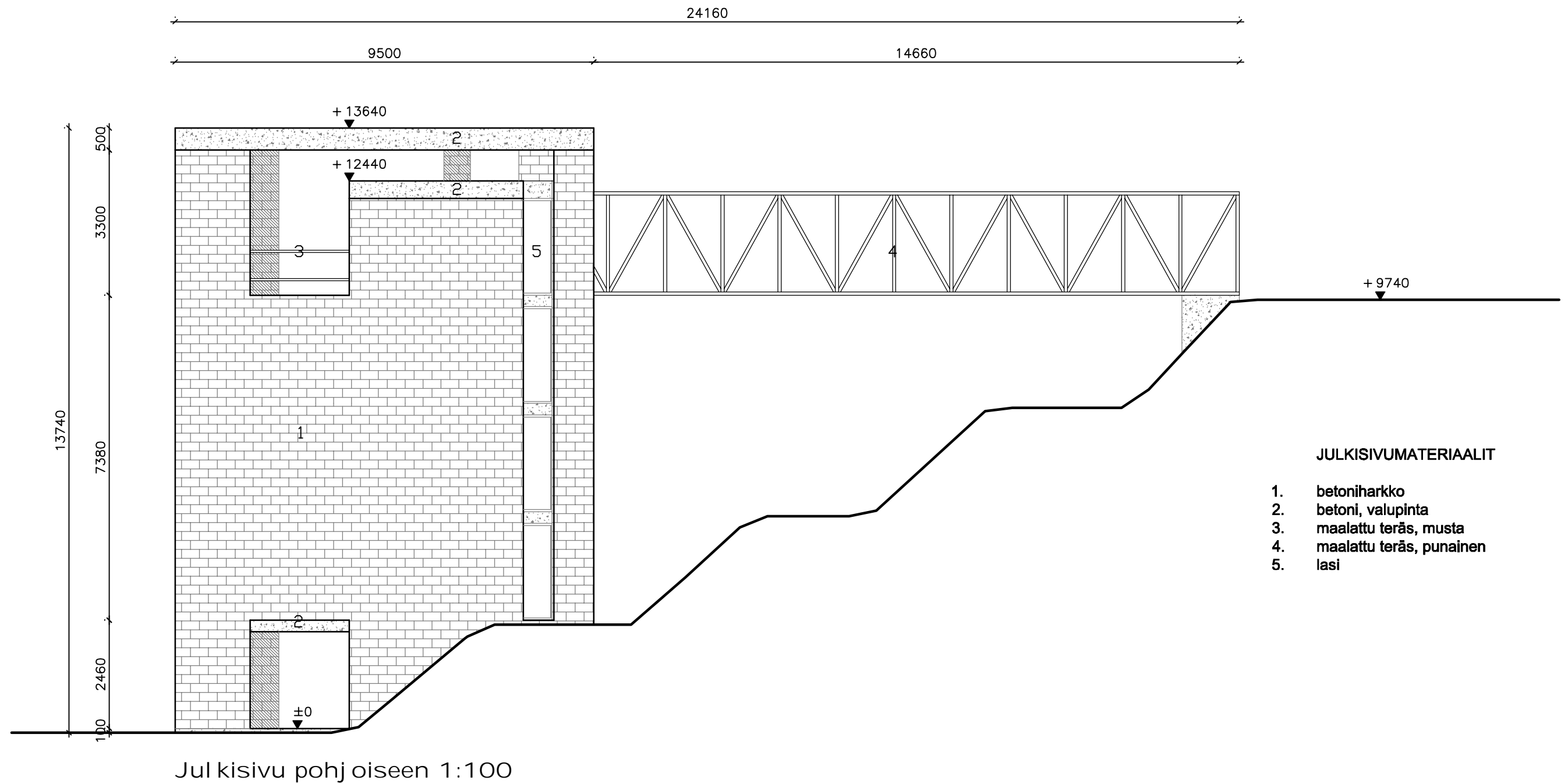
4. kerros 1:100



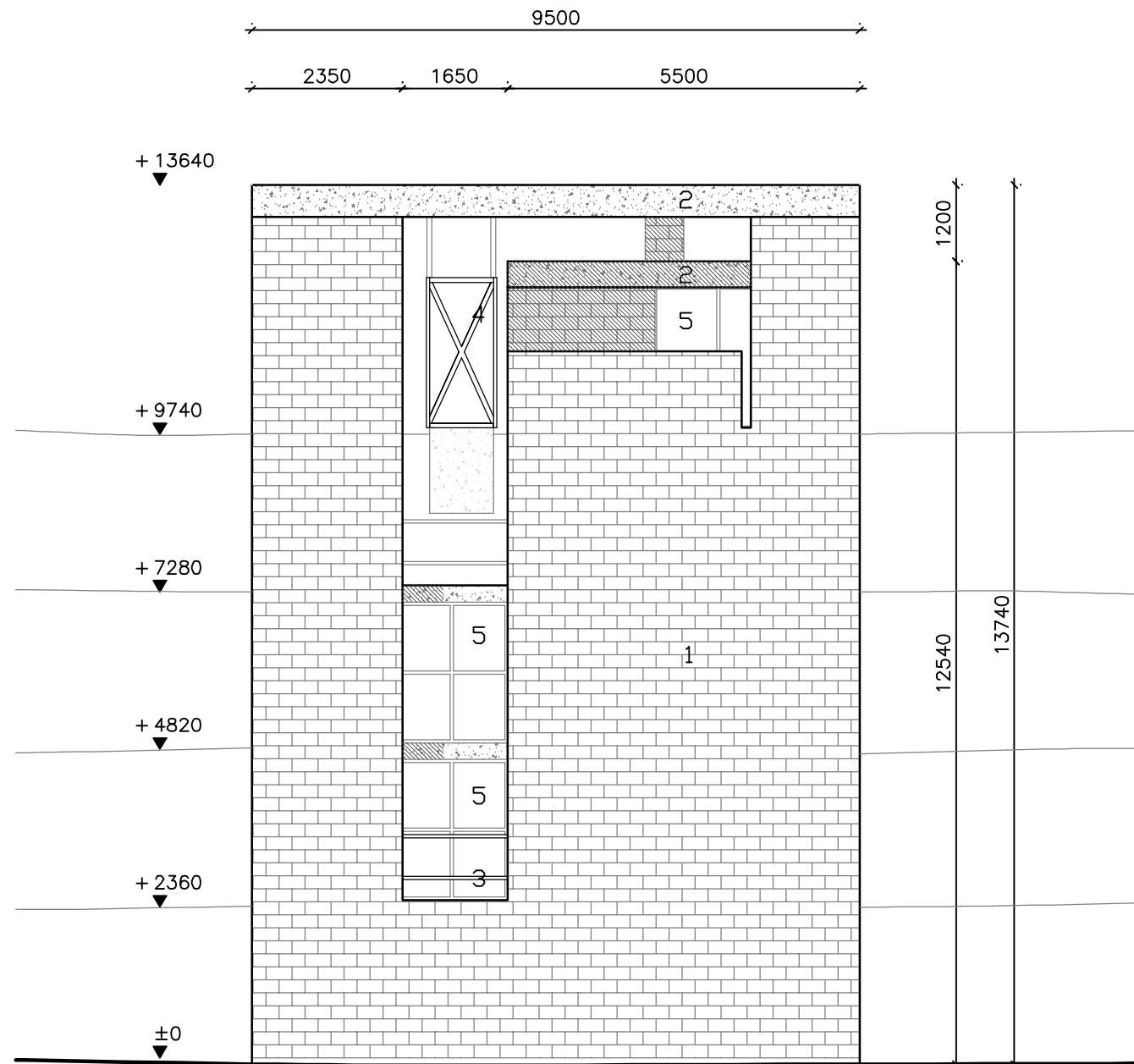
Mario Botta Bianchi House



Mario Botta Bianchi House



Mario Botta Bianchi House



Julkisivu itään 1:100

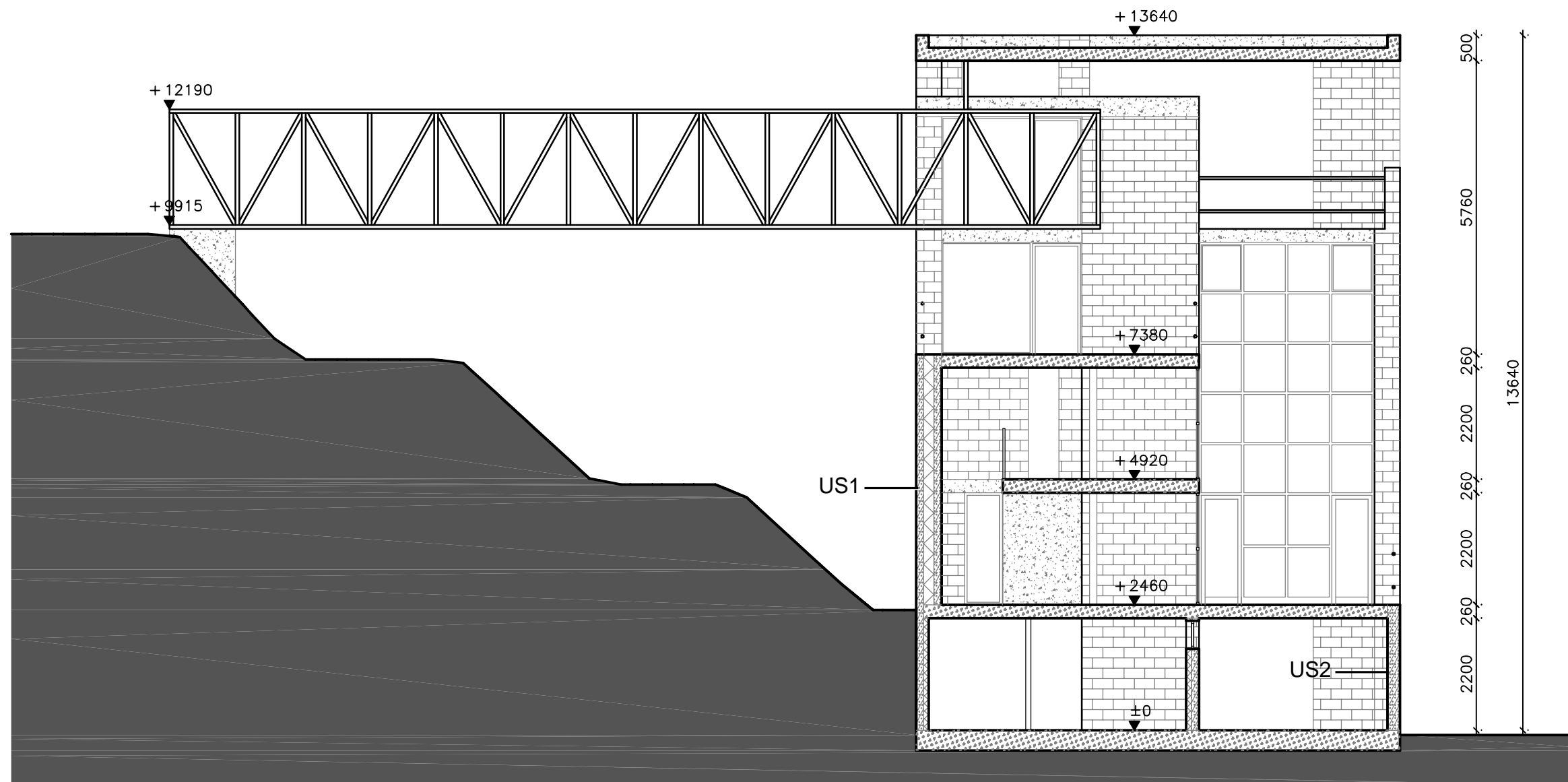
JULKISIVUMATERIAALIT

1. betoniharkko
2. betoni, valupinta
3. maalattu teräs, musta
4. maalattu teräs, punainen
5. lasi

Ovet - litterätiedot

lkm	Littera	Ovityyppi	Leveys	kätisyys	Korkeus
1	S1-7.8o	S1	780	o	2090
1	S1-7.8v	S1	780	v	2090
1	U1-6.9o	U1	690	o	2100
1	U1-6.9v	U1	690	v	2100
1	U2-7.8o	U2	780	o	1990
1	U2-7.8v	U2	780	v	1990
3	U3LASI-9.4v	U3LASI	935	v	2175

Mario Botta Bianchi House



Ieikkaus A-A 1:100

Mario Botta Bianchi House

